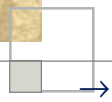




**RapidWall**<sup>®</sup>  
DISTRIBUTION (SA) PTY LTD

## → **Rapidwall Specification**

(for Astec Interior/Exterior Systems)



# Rapidwall Specification

Since the advent of Rapidwall, Astec Paints Australasia has worked in conjunction with Rapidwall to develop both protective and decorative coating systems that are integrally correct, ensuring the long term protection and aesthetics of Rapidwall Panel.

The coating systems manufactured by Astec have undergone rigorous field and laboratory test programs. These programs allow us to guarantee clients that our products and systems are of the standard necessary to meet all the performance requirements for Rapidwall and, furthermore, the systems will perform flawlessly when exposed to harsh environmental elements. Clients will have peace of mind knowing, that through our commitment to research and development, Astec products and systems are constantly reviewed and maintained with the most up to date advancements in coating technology.

As a building owner or applicator, you can be confident in the long term performance of your project, by using products that are supported by over a decade of proven results giving testimony to their quality and reliability.

Astec Systems for Rapidwall are complete systems, incorporating hydrophobic sealers, adhesion promoted interior wall finishes, wet area membranes, construction sealants, texture finishes and, most importantly, a crack bridging elastomeric wall coating that will ensure the entire building remains aesthetically appealing as well as waterproof. In addition, **the system can involve our highly acclaimed Energy Star® infrared heat reflective coatings both in paints & textures that have Codemark® certification in accordance with the Building Code of Australia**, tropic blended formulas for high mould resistance in tropical climates, high impact clear

(for Astec Armatex Texture Systems)

glaze coats for enhanced dirt pickup resistance and many product combinations to suit all budgetary and design considerations.

## → 1 SEALING AND BINDING THE SURFACE

**Astec Rivett** a clear 100% solution acrylic which provides outstanding sealing and binding of the substrate prior to coatings application. It must be used on all exterior surfaces and in all wet area applications including kitchen splash backs.

**Astec Rapid Seal** is a water based alternative to Astec Rivett, however it can *only* be used on **non-wet area interior surfaces** such as lounge/dining and bedrooms.

## → 2 WATERPROOFING AND TOPCOATS

The top coat will vary between interior/exterior and wet area applications.

The various suitable products are highlighted in the section notes following. Refer to the relevant Technical Bulletins and Performance Standards for full application requirements.

These products include:

### Astec Ure-seal

- Construction joint sealant and adhesive

### Astec Ure-plex

- Wet area waterproof membrane

### Energy Star® Armatex (Textures) or Armatex 100% Acrylic Textures

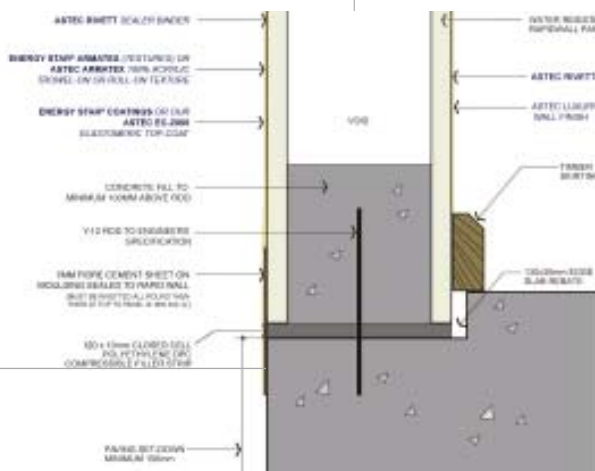
- 100% Acrylic Trowel-on and Roll-on Textures \*

### Astec Luxury Interior Finishes

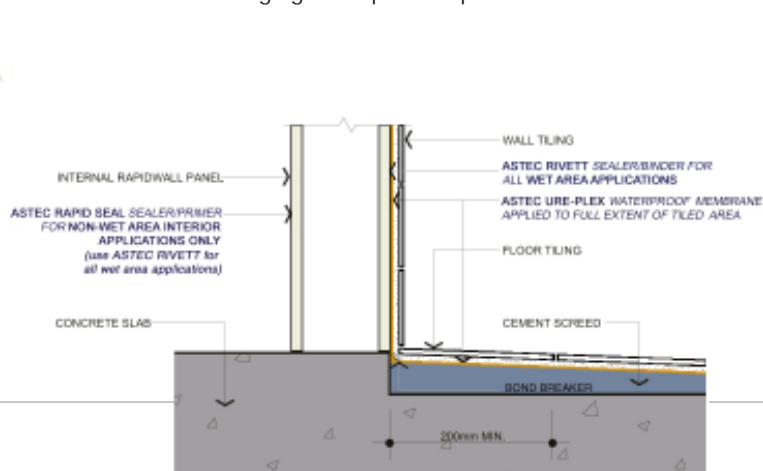
- Matt, Low Sheen, Satin, and Gloss Acrylics

### Energy Star® Coatings or our Astec EC-2000

- Crack bridging waterproof impact coat



EXTERNAL WALL DETAIL



SHOWER DETAIL

NOTE: REFER TO RAPIDWALL SPECIFICATION DRAWINGS FOR FURTHER DETAILS AND PRODUCT APPLICATIONS.





## Rapidwall Specification

(for Astec Armatex Texture Systems)

SUBSTRATE	PRODUCT NAME	NO. OF COATS REQUIRED	COVERAGE*
<b>Rapidwall [Exterior]</b>	Rivett - sealer/binder	One coat over entire surface	6-8m <sup>2</sup> per litre
	Energy Star® Armatex (textures) or Armatex 100% Acrylic Texture	One coat over entire surface	[Refer to coverage rates chart]
	Energy Star® Coatings or our EC-2000 Elastomeric Top-coat	Two coats over entire surface	2.5m <sup>2</sup> per litre
<b>Rapidwall [Interior]</b>	Rivett - sealer/binder <i>OR</i> Rapid Seal	One coat over entire surface <i>NON WET AREAS ONLY</i>	6-8m <sup>2</sup> per litre
	Astec Luxury Interior Finish	Low Sheen, Matt, Satin or Gloss	[SEE ON CAN DETAILS]
<b>Rapidwall [Wet Areas]</b> INCLUDES SPLASH BACK IN KITCHEN	Rivett - sealer/binder	One coat over entire surface	6-8m <sup>2</sup> per litre
	Ure-plex/Ure-seal	Refer to Technical Bulletins	



Heigh's Chocolates Visitor Centre

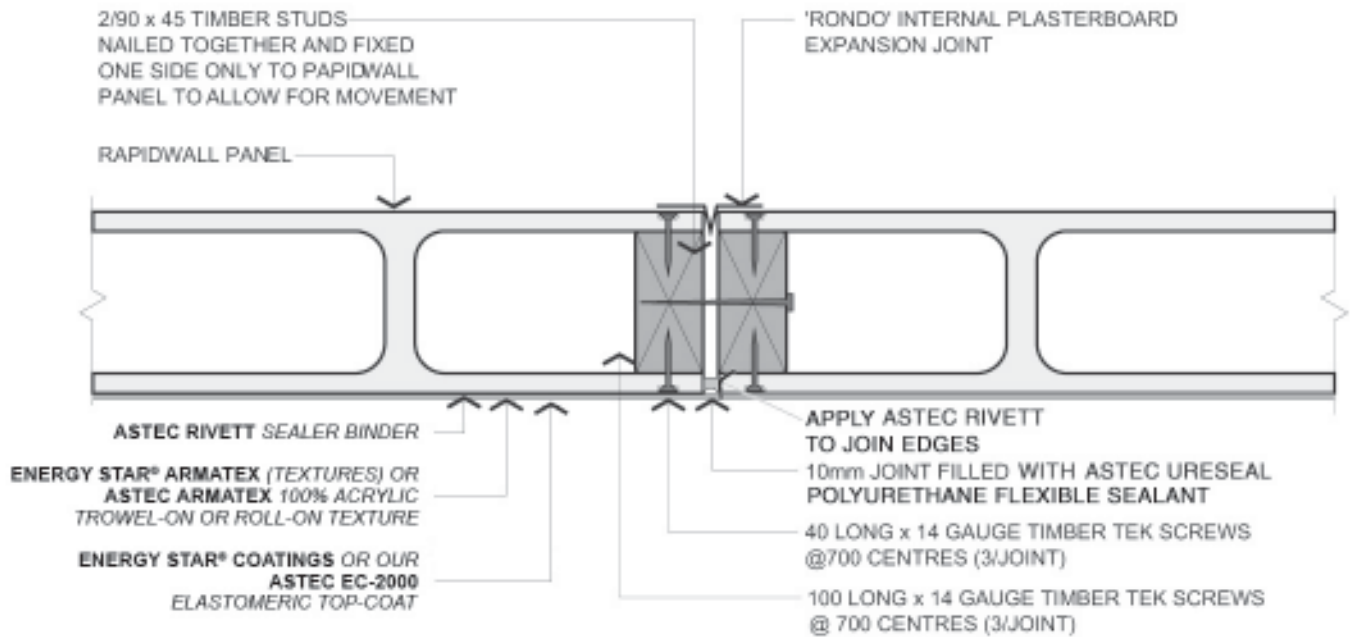


**NOTES:**

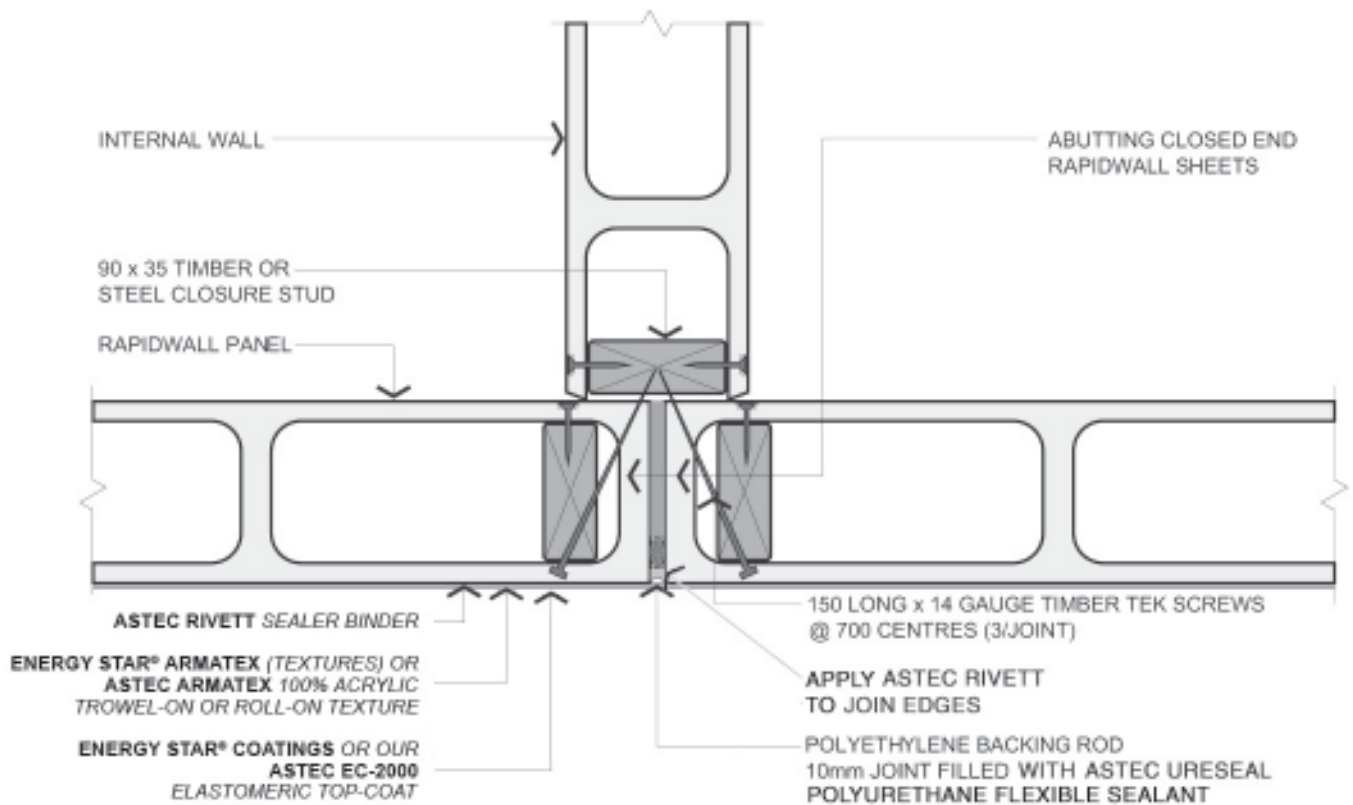
THE PRODUCTS SPECIFIED IN THIS DOCUMENT MUST BE USED IN ACCORDANCE WITH THEIR TECHNICAL BULLETINS AND PERFORMANCE STANDARDS, FOR FURTHER DOCUMENTATION PLEASE CONTACT YOUR ASTEC PAINTS REPRESENTATIVE.

\* COVERAGE INCLUDES:

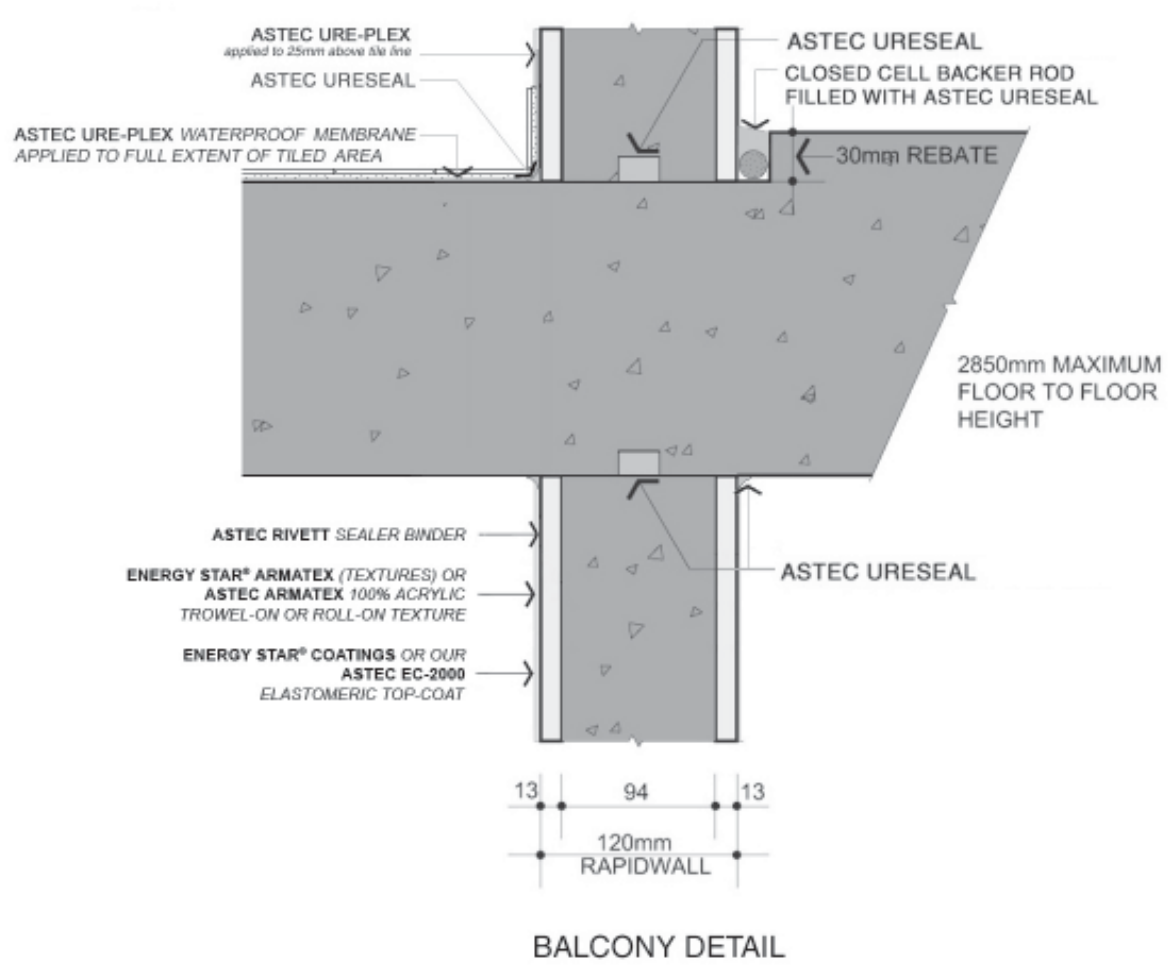
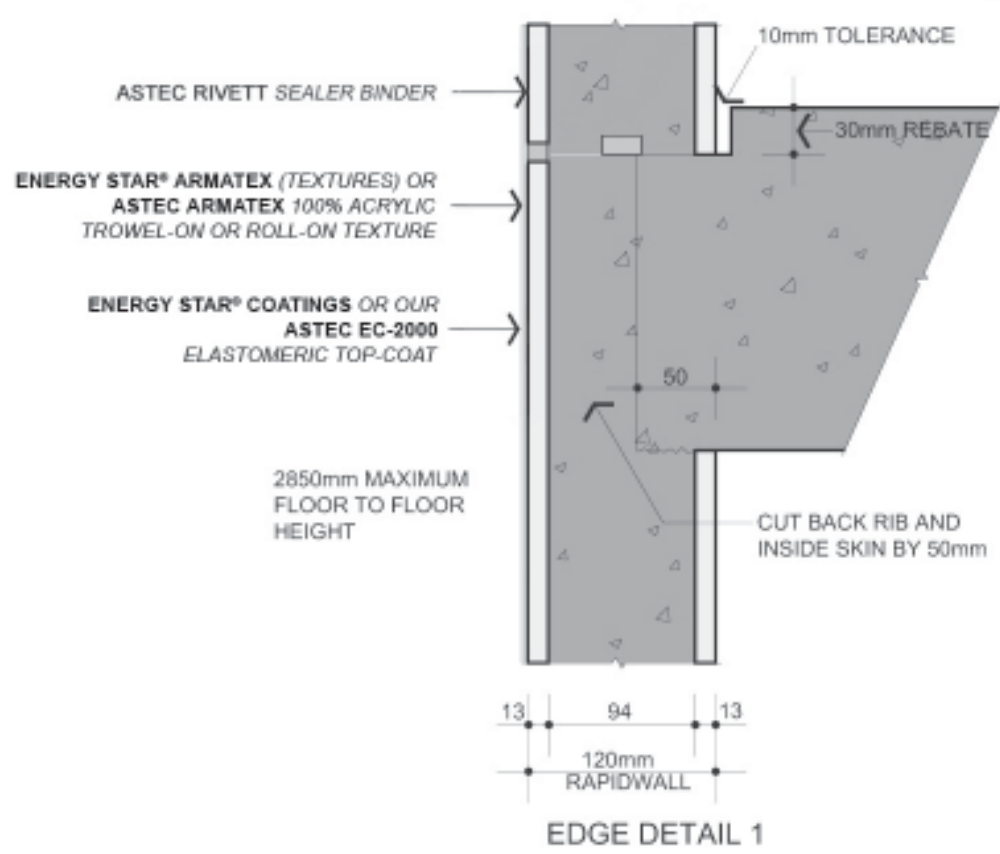
- The number of coats required
- Loss factors for application
- Substrate profile consideration
- Allowance for machinery fill

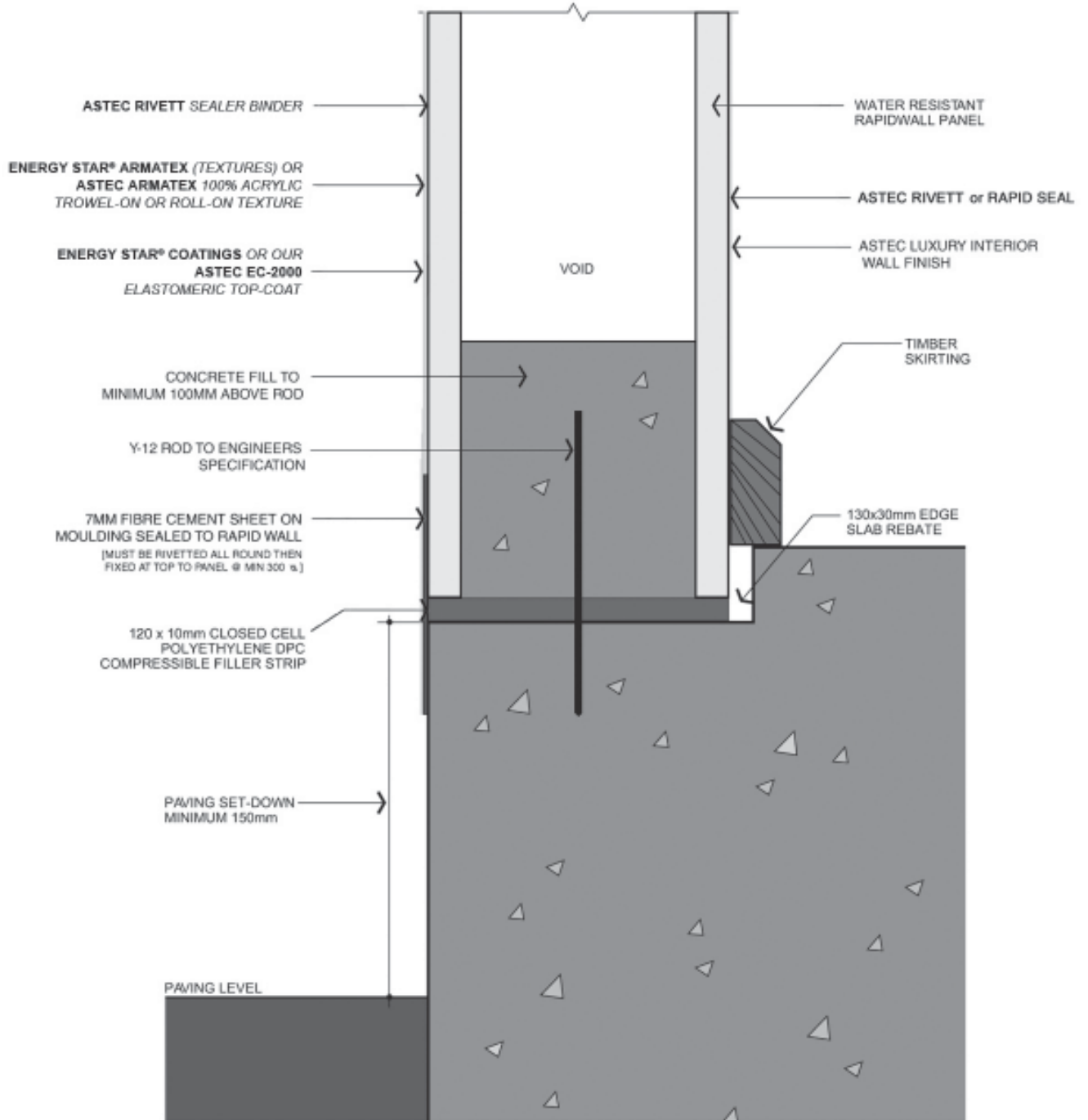


EXPANSION JOINT

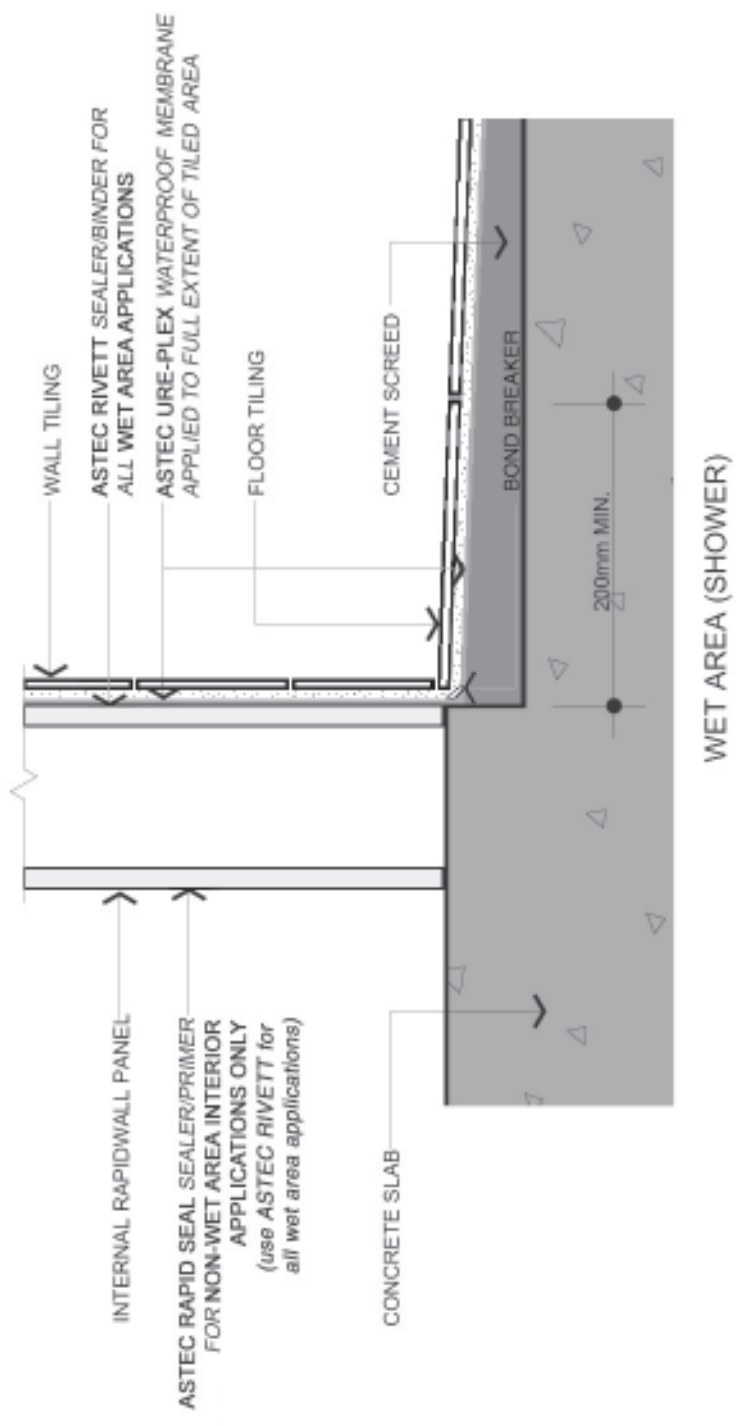


CONTROL JOINT 1





EXTERNAL WALL



The technical data furnished herein is based upon data believed by Astec Paints to be true and accurate at the time of writing, however, no guarantee of accuracy is given or implied and is subject to change without notice.

This information is given in good faith for the assistance of users. No legal warranty expressed or implied is made as to its accuracy, completeness or otherwise.

Every person dealing with this material herein does so at their own risk absolutely and must make independent determinations of suitability and completeness from all sources to ensure their proper use.

We have no control over the condition under which these products are stored, handled or used, therefore our recommendations must not be regarded as a mounting to legal warranty or as involving any liability on us.



Astec Paints Australasia Pty. Ltd.  
22-24 Pinn Street, St. Marys,  
South Australia 5042  
PO Box 321, Melrose Park, S.A. 5039

Web: [www.astecpaints.com.au](http://www.astecpaints.com.au)  
Email: [enquiries@astecpaints.com.au](mailto:enquiries@astecpaints.com.au)

Telephone: +61 8 8297 2000  
Facsimile: +61 8 8297 2555

Your nearest Astec Paints distributor is:



Revised Edition September, 2010

